



**Dnyaan Prasad Global University**  
**Dr. D. Y. Patil Unitech Society**  
**School of Technology and Research**

**FOSTERING A TRADITION OF  
EXCELLENCE SINCE 1983**



**ADMISSION BROCHURE  
2026-2027**

## PROMOTERS



**Padmashree Dr. D. Y. Patil**

*Founder President*

Dr. D. Y. Patil Unitech Society, Pune

**Former Governor: State of Bihar**



**Hon. Dr. P. D. Patil**

*Founder & President*

Dr. D. Y. Patil Unitech Society, Pune



**Hon. Dr. Bhagyashree Patil**

*Chancellor*

Dnyaan Prasad Global University, Pune

*President*

Dr. D. Y. Patil Unitech Society, Pune



**Hon. Dr. Somnath Patil**

*Pro-Chancellor*

Dnyaan Prasad Global University, Pune

*Secretary,*

Dr. D. Y. Patil Unitech Society, Pune



**Hon. Dr. Rohini Somnath Patil**

*Chief Operating Officer*

Dnyaan Prasad Global University, Pune

# **ABOUT DPGU SCHOOL OF TECHNOLOGY AND RESEARCH (STR)**

**By Dr. D. Y. Patil Unitech Society**

The School of Technology and Research (STR) at Dnyaan Prasad Global University, Pimpri, Pune, is built on the legacy of Dr. D. Y. Patil Group of Institutions, which began in the 1980s and was nurtured by our visionary leader, Hon. Dr. P. D. Patil. The institute is progressing under the dynamic leadership of Pro-Chancellor Hon. Dr. Somnath Patil. STR is a premier institution dedicated to quality-education, academic excellence and industry-driven learning.

This institute is located in the heart of the city, within walking distance of public transportation such as buses, railways and the metro.

## **PROGRAMS OFFERED**

### **Undergraduate Program**

**B. Tech Computer Science & Engineering**

**B.Tech Artificial Intelligence and Machine Learning**

**B.Tech Cybersecurity**

**B.Tech Electronics and Computer Engineering**

**B.Tech Mechanical Engineering**

**Direct Second Year Computer Science & Engineering**

### **Postgraduate Program**

**M. Tech Computer Science & Engineering**

### **Doctoral Program**

**PhD Computer Science & Engineering**





## **Hon. Dr. P. D. Patil**

*Founder & President*

Dr. D. Y. Patil Unitech Society, Pune

**Education is the passport to the future, for tomorrow belongs to those who prepare for it today.”**

**– Malcolm X**

The advancements in education have served as a transformative force, revolutionizing the realm of higher learning in India. At Dr. D. Y. Patil Unitech Society's, Dr. D. Y. Patil Dnyan Prasad University we have embraced this vision to provide world-class education through innovation, inclusivity, and excellence in the field of education. Our academic programs are tailored to meet global standards, fostering an environment where students, faculty, and industry stakeholders thrive.

Our commitment to greater autonomy, enhanced infrastructure, and the integration of advanced technologies reflects a steadfast dedication to academic and professional excellence.

Aligned with the vision of fostering a knowledge driven economy, We empower all stakeholders with opportunities for growth, achievement, and meaningful contributions to society, shaping a brighter future for generations to come..



## **Hon. Dr. Bhagyashree Patil**

*Chancellor*

Dnyaan Prasad Global University, Pune

**"Education is the foundation upon which we build a better future."**

**– Christine Gregoire**

We are dedicated to nurturing excellence and fostering innovation through a multidisciplinary approach at Dnyaan Prasad Global University. Our diverse schools are designed to equip students with knowledge, skills, and ethical values, empowering them to excel in their chosen fields and contribute meaningfully to society. With a focus on academic rigor, professional growth, and holistic development, we cultivate visionary leaders, skilled professionals, and creative thinkers across various disciplines. By nurturing an environment of intellectual exploration and practical learning, we aim to shape a future enriched by knowledge, innovation, and social responsibility. Our University stands as a beacon of educational excellence, fostering a nurturing environment where students can thrive academically and personally. Together, let us shape a future enriched by knowledge, innovation, and social responsibility.



## **Hon. Dr. Somnath Patil**

*Pro-Chancellor*

Dnyaan Prasad Global University, Pune

*Secretary,*

Dr. D. Y. Patil Unitech Society, Pune

It gives me immense pleasure to welcome you to Dnyaan Prasad Global University, a place where learning meets purpose and potential transforms into achievement.

As an educationist and entrepreneur, my vision has always been to create a nurturing ecosystem where innovation, creativity, and technology come together to empower students to realize their fullest potential. At our university, we are deeply committed to providing you not only with academic excellence but with the guidance, resources, and environment you need to grow into future-ready professionals.

The world around us is changing rapidly. Technological advancements and global interconnectedness are reshaping industries and redefining careers. In this evolving landscape, success depends on your ability to adapt, think critically, and lead with purpose. That's why, at Dnyaan Prasad Global University we have designed our programs to be flexible, relevant, and future-oriented. We emphasize experiential learning, foster global perspectives, and cultivate an entrepreneurial mindset ensuring that your education is deeply rooted in real-world applications. Here, you will not only gain knowledge from distinguished faculty and modern curriculum, but you'll also engage in hands-on experiences that prepare you to thrive in the professional world. Our aim is to help you bridge the gap between classroom learning and industry expectations nurturing leaders, innovators, and change makers. As you embark on this transformative journey, I encourage you to stay curious, think boldly, and seize every opportunity that comes your way. Let this be a time of discovery, growth, and laying the foundation for a meaningful and impactful future.

Wishing you success, growth, and inspiration in the years ahead.



## **Hon. Dr. Rohini Somnath Patil**

*Chief Operating Officer*

Dnyaan Prasad Global University, Pune

It is my privilege to welcome you to Dnyaan Prasad Global University (DPGU), where education goes beyond textbooks to foster innovation, practical learning, and holistic development.

At DPGU, we believe that every student holds immense potential, waiting to be nurtured in an ecosystem that values creativity, critical thinking, and real-world application. As the Chief Operating Officer, my focus has always been to create a student-centric environment where modern infrastructure, industry-aligned curriculum, and hands-on experiences come together to empower young minds. In today's rapidly evolving world, where technology and global dynamics constantly reshape industries, adaptability, problem-solving ability, and an entrepreneurial mindset are more important than ever. Our programs are designed to equip students not just with theoretical knowledge but with the skills and confidence to excel in their chosen careers. We are committed to supporting students at every step of their academic journey, offering guidance, mentoring, and industry exposure to bridge the gap between classroom learning and professional success. Through collaborations, cutting-edge labs, digital learning platforms, and a vibrant campus life, we strive to prepare students to become future leaders, innovators, and responsible global citizens.

To parents, I assure you that your child is in a place that values integrity, academic rigor, and personal growth. We partner closely with families to provide a safe, supportive, and inspiring environment where students can thrive. As you begin this exciting chapter, I encourage you to embrace curiosity, remain open to challenges, and make the most of every opportunity. Together, let's shape a future full of promise and achievement.

Wishing you a rewarding and transformative experience at DPGU.



## DISCOVER THE DIFFERENCE

### DPGU SCHOOL OF TECHNOLOGY AND RESEARCH



40+ Years of  
Legacy



World Class  
Infrastructure



High Placement  
Success Rate



Innovations with  
Cutting Edge Research



Experiential  
Learning Approach

## **B.TECH**

### **COMPUTER SCIENCE & ENGINEERING**

---

The B.Tech. program in Computer Science & Engineering is an industry-driven program designed to build a strong technical foundation while fostering creativity, problem-solving and innovation. With a modern application-oriented curriculum, students gain hands-on expertise that seamlessly integrates theory and real-world practice, ensuring a dynamic learning experience. The program equips graduates with essential technical, professional and adaptive skills, preparing them for successful careers in technology, research and entrepreneurship while promoting holistic growth.

## **B.TECH**

### **ARTIFICIAL INTELLIGENCE AND MACHINE LEARNING (AI & ML)**

---

B.Tech. program in Artificial Intelligence and Machine Learning (AI & ML) is an industry-oriented program designed to develop intelligent systems and data-driven solutions for real-world challenges. It builds a strong foundation in core computing concepts while emphasizing advanced areas such as machine learning, deep learning, data analytics and intelligent automation. With a modern, application-focused curriculum, students gain hands-on experience through projects, laboratories and industry collaborations that seamlessly integrate theory with practical implementation. The program fosters innovation, analytical thinking and problem-solving abilities, enabling learners to design and deploy AI-powered solutions across diverse domains.

## **B.TECH**

### **CYBERSECURITY**

---

B.Tech. program in Cyber Security is an industry-focused program designed to develop skilled professionals capable of protecting digital systems, networks and data from evolving cyber threats. It builds a strong foundation in core computing while emphasizing critical areas such as network security, cryptography, ethical hacking, digital forensics and information security management. With a modern, application-oriented curriculum, students gain hands-on experience through security labs, simulations, real-time threat analysis and industry-driven projects that seamlessly integrate theoretical knowledge with practical implementation. The program fosters analytical thinking, risk assessment abilities and proactive problem-solving skills essential for safeguarding digital infrastructures.

## **B.TECH**

### **ELECTRONICS AND COMPUTER ENGINEERING**

B.Tech. program in Electronics and Computer Engineering is a multidisciplinary, industry-aligned program designed to bridge the domains of computing and modern electronics. It builds a strong foundation in core areas such as computer architecture, programming, digital electronics and embedded systems, while enabling students to understand the seamless integration of hardware and software in today's intelligent systems. With a contemporary, application-oriented curriculum, students gain hands-on experience through laboratories, design projects and industry-linked initiatives that integrate theoretical concepts with real-world implementation. The program emphasizes areas such as IoT, VLSI design, robotics, communication systems and edge computing, fostering innovation, system-level thinking and problem-solving capabilities.

## **B.TECH**

### **MECHANICAL ENGINEERING**

The B.Tech. program in Mechanical Engineering is an industry-oriented program designed to build a strong foundation in engineering principles while fostering innovation, problem-solving and practical application. With a modern curriculum that integrates design, manufacturing, thermal sciences, automation and emerging technologies, students gain hands-on experience through laboratories, projects and industry collaborations. The program equips graduates with essential technical, analytical and professional skills, preparing them for successful careers in engineering, manufacturing, research and entrepreneurship while enabling them to contribute effectively to the evolving industrial landscape.

## **HIGHLIGHTS**

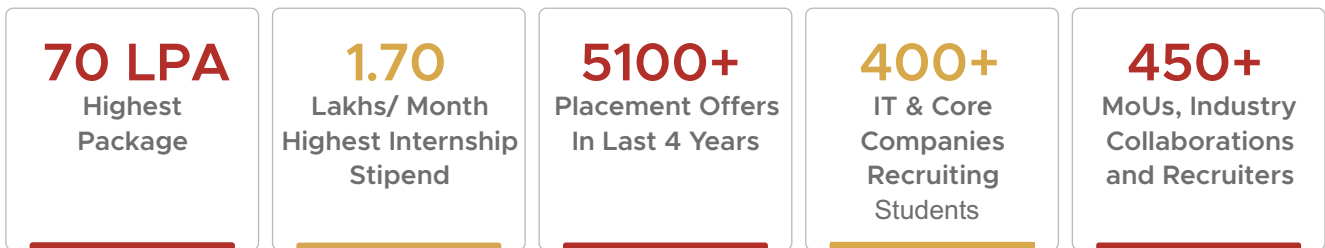
- Industry aligned curriculum curated by industry leaders
- State of the art infrastructure and cutting-edge laboratories equipped with GPU's enabling Computer Vision based experimentations
- Highly skilled and qualified faculty augmented with industry trainers
- Project based learning for all courses with complete hands-on exposure in varied technologies and tools
- German and Japanese language training
- Strong Industry tie ups and Internship opportunities
- Global certification programmes in association with industry
- Strong Placement cell with tie up with top IT industries
- Higher studies and entrepreneurship support
- Liaison with Professional Students body chapters and forums
- Soft skill, aptitude and career counseling workshops
- Merit and need based scholarships
- Strong alumni base with alumni events offering networking opportunities

## PLACEMENT

The Training and Placement Cell at the School of Technology and Research is crucial in shaping the future of engineering students by overseeing their campus placements. As a fundamental part of the Institute, the T & P Cell is dedicated to achieve their career objectives by providing them with essential job-seeking skills, empowering them to secure their desired positions.

To accomplish this, the Training and Placement Cell builds strong collaborations between students, alumni, faculty and industry professionals, ensuring students are well-prepared for the job market.

## OUR PROMINENT PLACEMENTS IN ENGINEERING

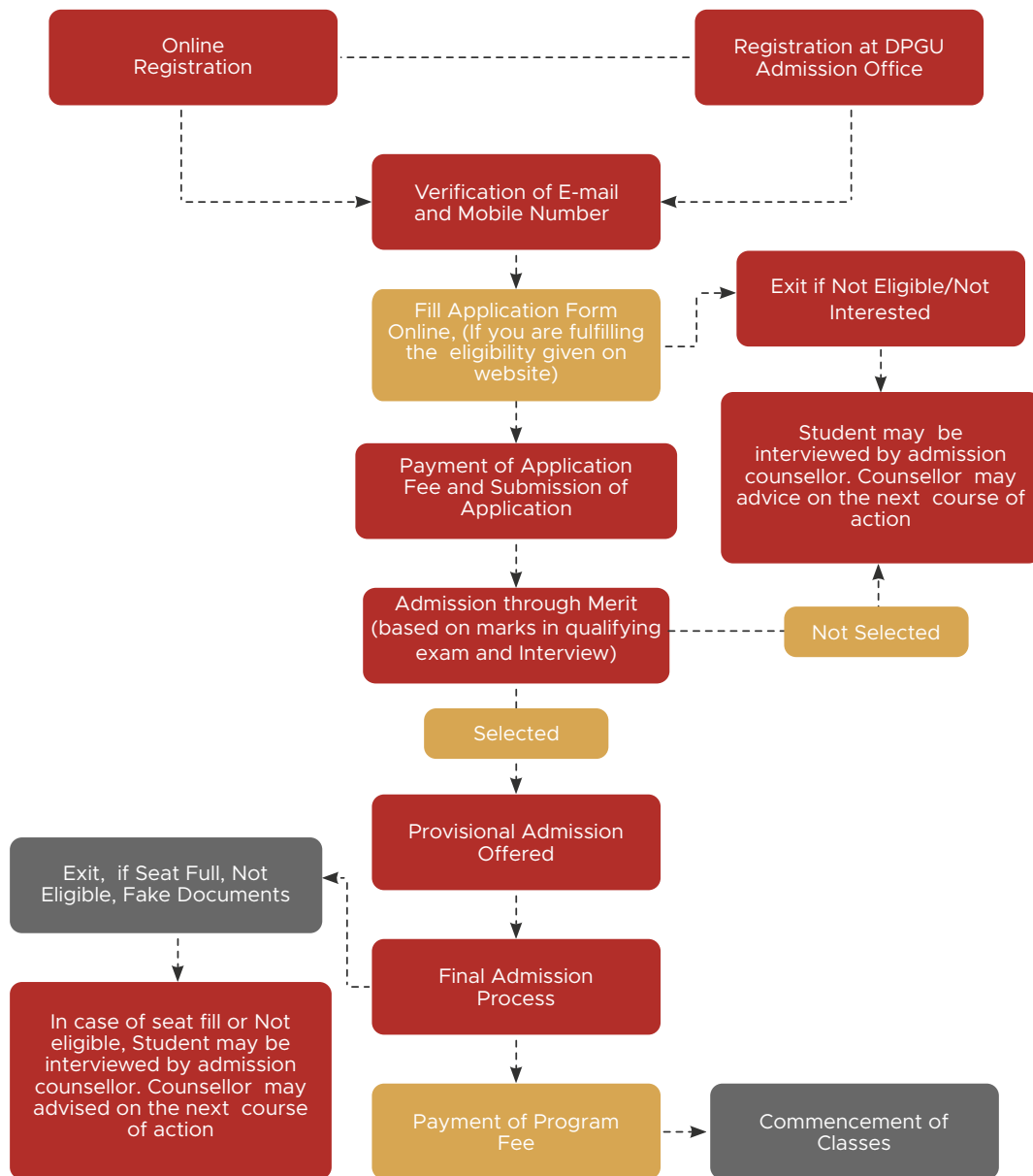


## INDUSTRY CONNECT



And Many More...

# ADMISSION PROCEDURE



# SCHOLARSHIPS OFFERED

Scholarships available based on merit and eligibility.

## M.Tech. Computer Science & Engineering

The M.Tech. program in Computer Science & Engineering is a research-driven, two year postgraduate program designed to provide in-depth knowledge and expertise in advanced areas of computing. It provides a strong foundation in computational theories while emphasizing hands-on applications and innovative research. The industry-aligned curriculum fosters problem-solving, creativity and real-world solution development. With a balanced blend of core subjects, specialized electives, practical training and extensive project work, graduates are well-equipped for careers in academia, industry and research. The program nurtures critical thinking, encourages technological innovation and prepares students to shape the future of computing.

## Ph. D. Computer Science & Engineering

The Ph.D. in Computer Science & Engineering is a rigorous doctoral program aimed at developing researchers who will drive advancements in computing technologies. The curriculum is designed to groom candidates for impactful careers in academia, industry combining advanced course work with in-depth research exploration. It promotes multidisciplinary collaboration and groundbreaking discoveries in key areas of computer science and related domains. Candidates contribute to the growth of technology by conducting intensive research and intellectual inquiry, pushing the boundaries of knowledge and addressing complex real-world situations.

### Highlights

- Research-Driven Curriculum
- State-of-the-Art Research Facilities
- Industry-Aligned Specializations
- Flexible Learning for Working Professionals
- Highly Qualified & Experienced Faculty Members
- Internships & Industry Collaborations
- Hands-on Learning Approach
- Publications & Patent Support
- Entrepreneurship & Start-Up Support
- Impressive Placements

### Research Domains

- Artificial Intelligence & Machine Learning (AI/ML)
- Deep Learning, NLP Generative AI
- Data Science & Big Data Analytics
- Cybersecurity & Cryptography
- Internet of Things (IoT) & Smart Systems
- Cloud Computing & Distributed Systems
- Blockchain Technology
- Computer Vision & Image Processing
- Robotics, Automation & Embedded Systems
- High-Performance Computing (HPC) & Parallel Processing
- Human-Computer Interaction (HCI) & UX Design
- Networking & Communication Technologies

# INFRASTRUCTURE AND FACILITIES

The college is located at Pimpri in the heart of Pimpri-Chinchwad industrial belt. The campus has well ventilated, spacious smart classrooms, seminar rooms, laboratories, library, administrative block and conference hall.



# STUDENT LIFE AT STR





**Dnyaan Prasad Global University**  
Dr. D. Y. Patil Unitech Society  
**School of Technology and Research**

## ANTI-RAGGING CELL

Join hands to make your campus ragging free.

### Any act resulting in:

- Mental / Physical / Sexual Abuse
- Verbal Abuse
- Indecent Behaviour
- Criminal Intimation / Wrongful Restraint
- Undermining Human Dignity
- Financial Exploitation / Extortion
- Any type of use of force

### A student indulging in ragging can be

- Expelled from the Institution
- Banned from the Mess / Hostel
- His /Her Scholarship (if any) can be withdrawn
- Debarred from Examinations
- Lodged FIR with Local Police
- Prosecuted for Criminal Action

## ANTI RAGGING HELPLINE

UGC Toll free Anti -Ragging Help line Number :

**1800-180-5522**

E-mail : [help\\_line @ antiragging](mailto:help_line@antiragging)

Telephone numbers of Institute : **020-27805292**

Mobile no : **+91-911 2222 503**

Anti-Ragging Nodal Officer Name

**Dr. Pushparaj S. Warke**

Anti-Ragging Nodal Officer Mail ID :

[pushparaj.warke@dypvp.edu.in](mailto:pushparaj.warke@dypvp.edu.in)



**Apply Now**

**+91 911 2222 503 | 020-27805292**

**admissions@dypdpu.edu.in | dpgu.edu.in**

**Sant Tukaram Nagar, Pimpri, Pune-411018.**



### How to Reach

**1 KM**  
from Pimpri  
Metro Station

**1.4 KM**  
from Kasarwadi  
Railway Station

**1 KM**  
from Sant Tukaram  
Nagar Bus Stop

**17.4 KM**  
from Pune  
Airport

**14.4 KM**  
from Pune  
Railway Station

